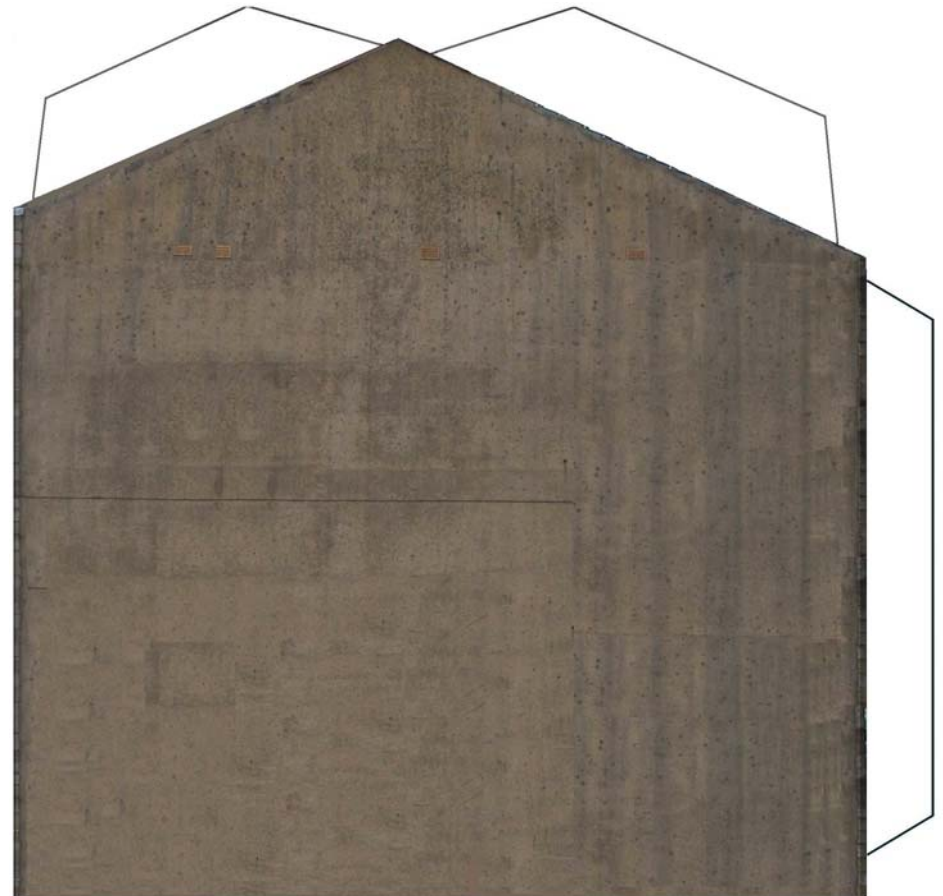


Free Download from www.Hall-Royd-Junction.co.uk
© J K Wallace 2013 All rights reserved; for personal use only
Chiltern Modelling Services, P&A House, Alma Road, Chesham, Bucks. HP5 3HB, UK

80 Halifax Road, Todmorden 4mm scale Sheet 1

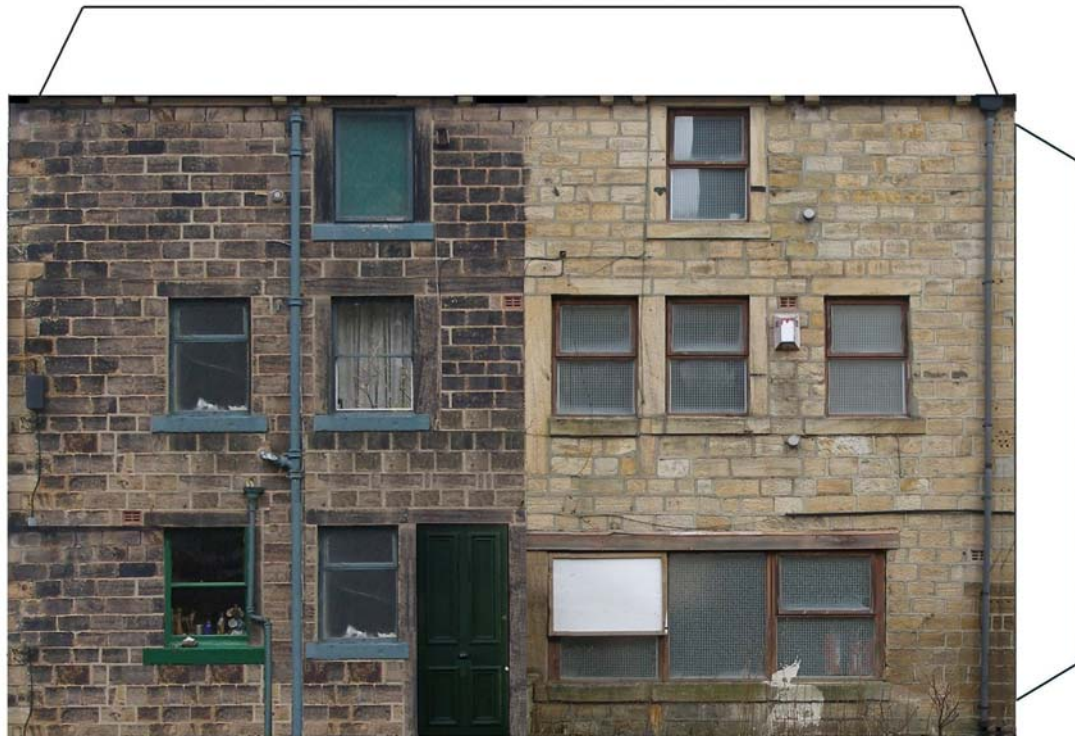


Free Download from www.Hall-Royd-Junction.co.uk

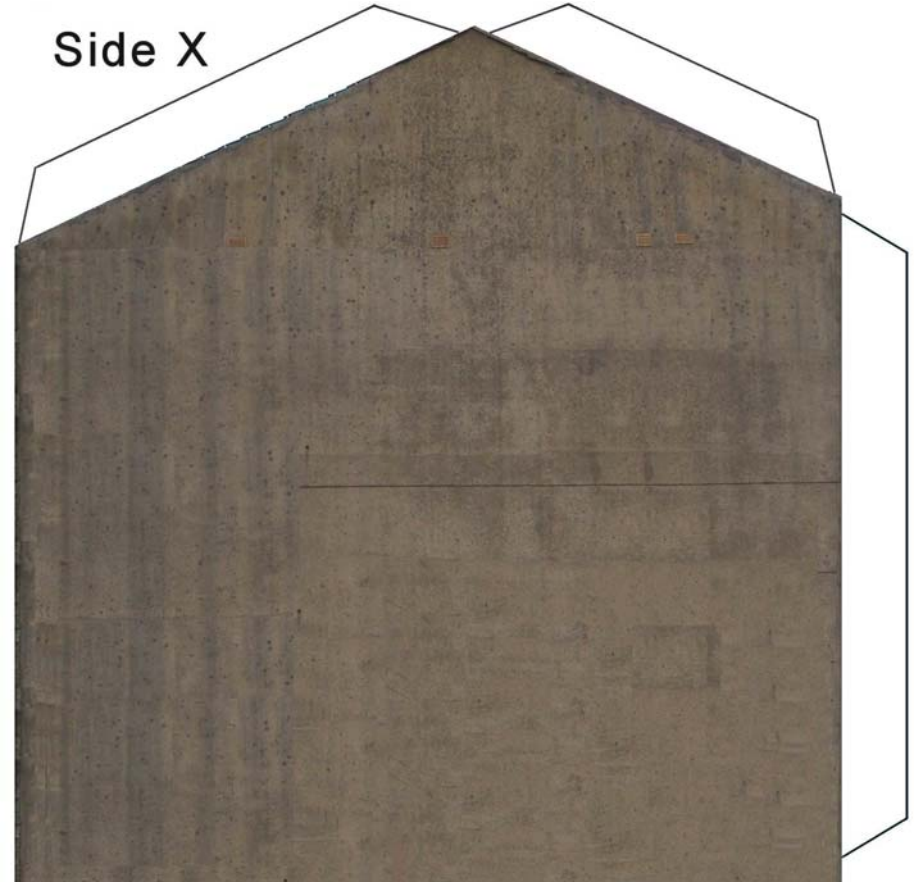
© J K Wallace 2013 All rights reserved; for personal use only

Chiltern Modelling Services, P&A House, Alma Road, Chesham, Bucks. HP5 3HB, UK

80 Halifax Road, Todmorden 4mm scale Sheet 2



Side X



Free Download from www.Hall-Royd-Junction.co.uk

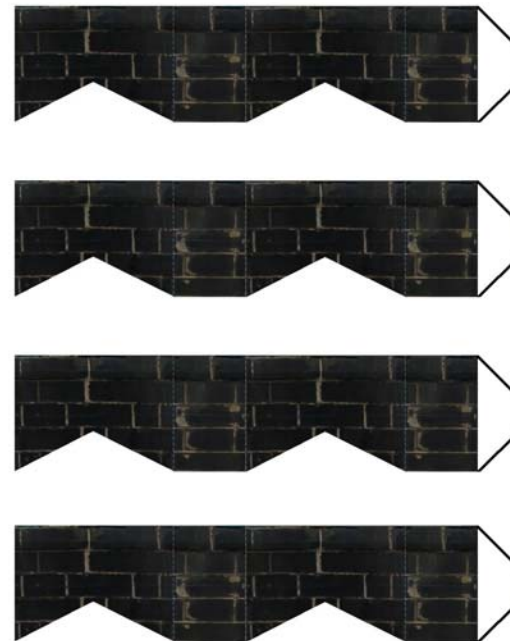
© J K Wallace 2013 All rights reserved; for personal use only

Chiltern Modelling Services, P&A House, Alma Road, Chesham, Bucks. HP5 3HB, UK

80 Halifax Road, Todmorden 4mm scale Sheet 3



Side X
alternative

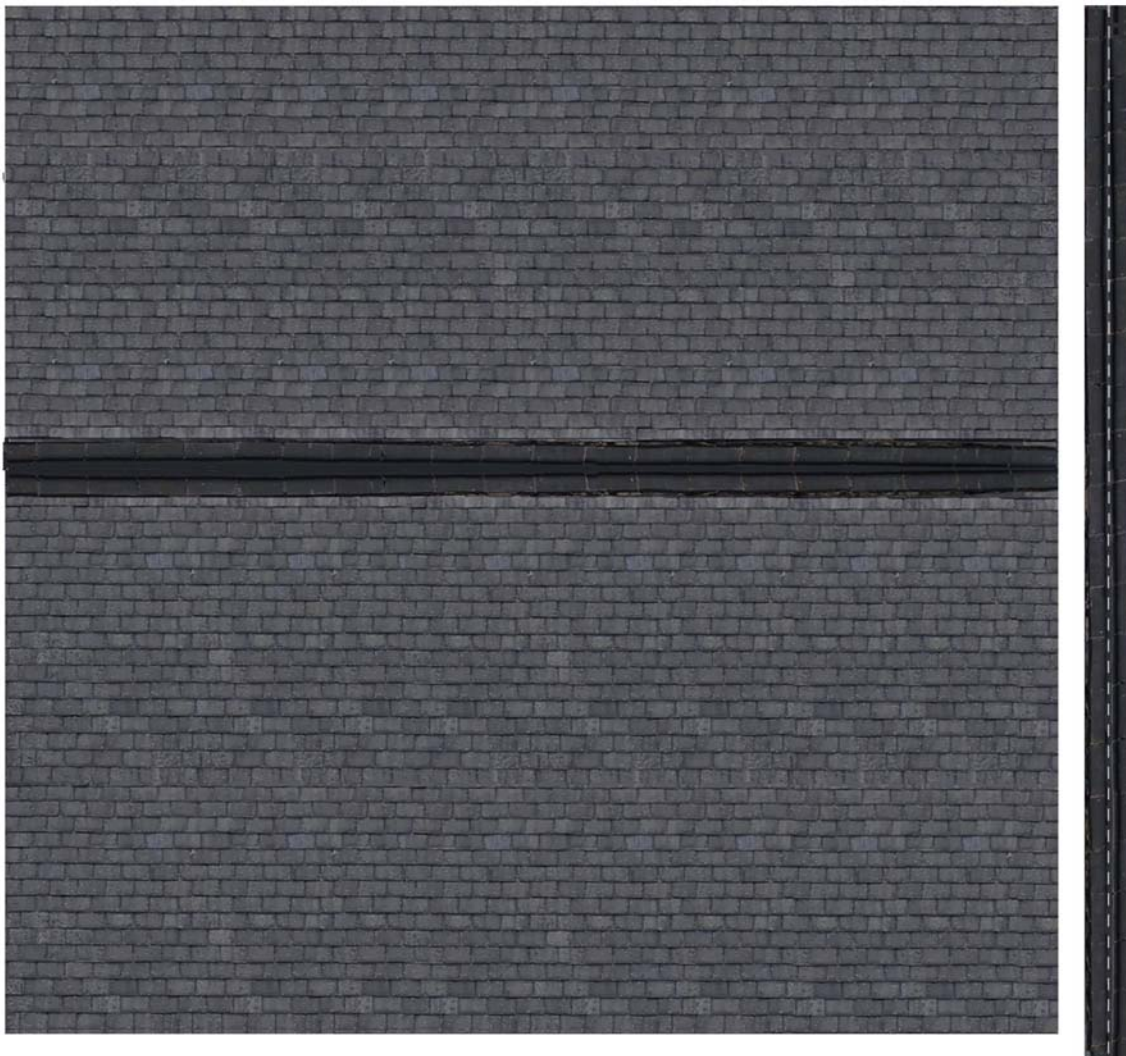


Free Download from www.Hall-Royd-Junction.co.uk

© J K Wallace 2013 All rights reserved; for personal use only

Chiltern Modelling Services, P&A House, Alma Road, Chesham, Bucks. HP5 3HB, UK

80 Halifax Road, Todmorden 4mm scale Sheet 4



Notes:

- This is a **free** download from www.hall-royd-junction.co.uk to create a pair of buildings on Halifax Road, Todmorden, as they were in April 2013.
- It can be printed out, and assembled using the tabs provided to glue the wall sections together, and then affix the two roof panels, noting that these are handed, the smaller section being at the front. There is an alternative left hand gable, which shows the modern stone finish and fire escapes.
- Or the parts can be cut out and then affixed onto mounting board. A deluxe version can be created using three layers: print out three copies of the front and rear sheets, gluing the first onto mounting board and coat the windows with gloss varnish. Affix the second sheet to thin card and cut out the glass in the various windows, so that you have the walls and glazing bars, and glue onto the varnished sheet. Finally, affix the third sheet to mounting board and cut out the windows and doors, leaving just the stonework, and glue as the top surface on a three layer sandwich. The end gables should be mounted on board which makes allowance for the front and back, so that there is a 3mm overlap. Glue the sides together, affix the roof panels onto mounting board and fix in place.
- Assemble the chimney stacks. On the prototype there is only one, mounted approximately 4mm inboard from the edge of the roof on the right hand side (looking from the front).